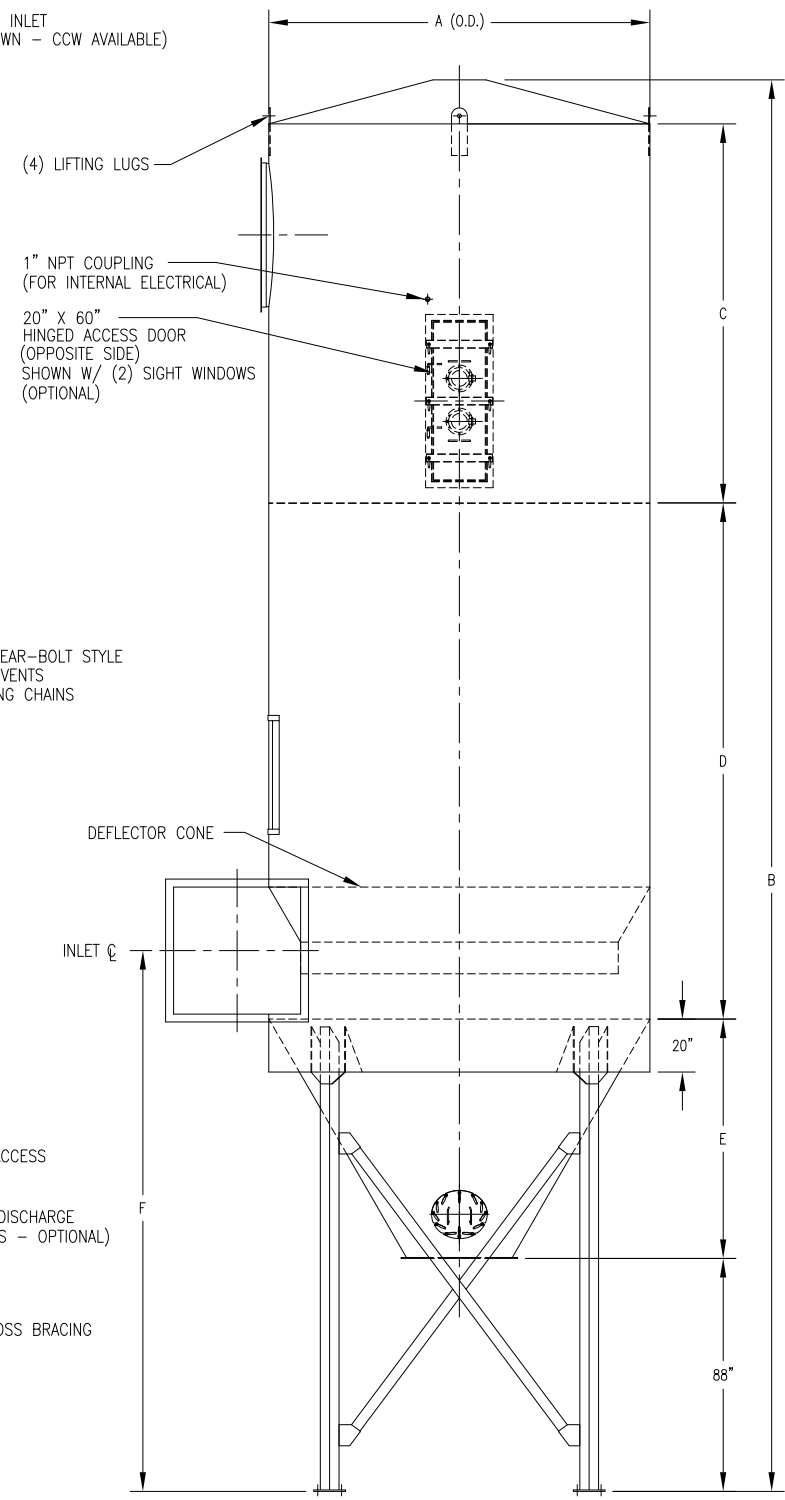
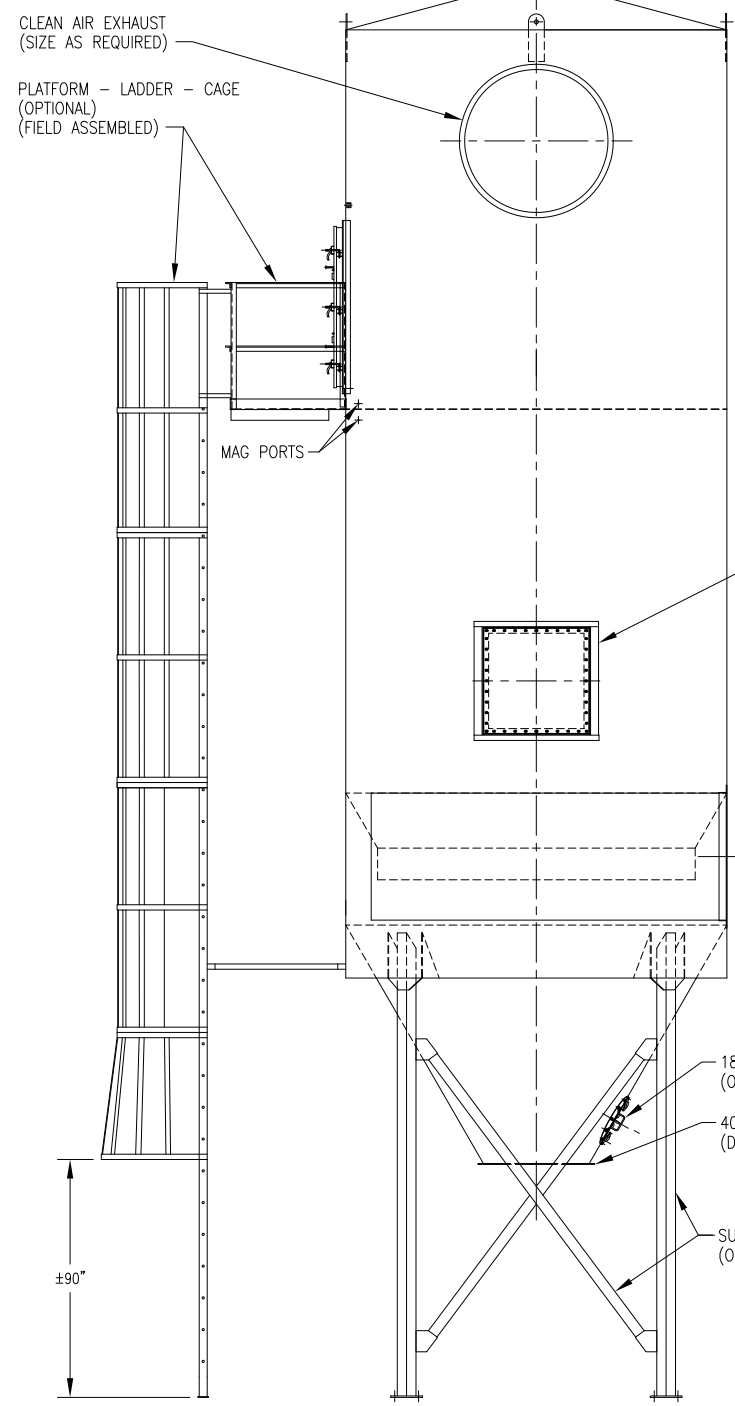


NUMEROUS ORIENTATIONS - CONFIGURATIONS AVAILABLE



MODEL 6SWF48 THRU 12SWF504																
MODEL NUMBER	FILTER MEDIA (SQ. FT.)	QUAN. OF BAGS	BAG LENGTH (IN FT.)	MAT'L OF CONST.	DIMENSIONS (INCHES)								REVERSE AIR FAN H.P.	# OF EXPLOSION VENTS	EST. INSTALLED WT./LBS.	
					A	B	C	D	E	F	G	H				J
6SWF48	348	48	6	12 GA.	60	316 5/16	95 1/4	110	17 11/16	118 11/16	20	35	40 1/8	5 HP	1 *	5095
8SWF48	464		8			364 5/16	119 1/4	134						5 HP	1 *	5690
10SWF48	581		10			412 5/16	143 1/4	158						5 HP	2 *	6288
6SWF80	580	80	6	12 GA.	72	332 5/16	95 1/4	114	28 1/16	131 1/16	24	42	48 5/8	5 HP	1	5681
8SWF80	774		8			380 5/16	119 1/4	138						5 HP	1	6391
10SWF80	968		10			428 5/16	143 1/4	162						5 HP	1	7105
8SWF112	1084	112	8	10 GA.	84	396 5/16	119 1/4	142	38 1/2	143 1/2	28	49	57 1/16	5 HP	1	7943
10SWF112	1355		10			444 5/16	143 1/4	166						7.5 HP	2	8897
12SWF112	1626		12			468 5/16	143 1/4	190						7.5 HP	2	9600
8SWF152	1471	152	8	10 GA.	96	412 5/16	119 1/4	146	48 7/8	155 7/8	32	56	65 9/16	7.5 HP	2	9092
10SWF152	1839		10			460 5/16	143 1/4	170						7.5 HP	2	10234
12SWF152	2207		12			484 5/16	143 1/4	194						10 HP	2	11051
8SWF200	1936	200	8	10 GA.	108	428 5/16	119 1/4	150	59 1/4	168 1/4	36	63	72 9/16	7.5 HP	2	11036
10SWF200	2420		10			476 5/16	143 1/4	174						10 HP	2	12120
12SWF200	2904		12			500 5/16	143 1/4	198						10 HP	3	13095
8SWF256	2478	256	8	10 GA.	120	444 5/16	119 1/4	154	69 11/16	180 11/16	40	70	81 1/16	7.5 HP	3	12350
10SWF256	3097		10			492 5/16	143 1/4	178						10 HP	3	13780
12SWF256	3717		12			516 5/16	143 1/4	202						15 HP	3	14856
8SWF312	3020	312	8	10 GA.	132	460 5/16	119 1/4	158	80 1/16	193 1/16	44	77	89 9/16	10 HP	3	13908
10SWF312	3775		10			508 5/16	143 1/4	182						10 HP	3	15487
12SWF312	4530		12			532 5/16	143 1/4	206						15 HP	4	16727
8SWF368	3562	368	8	10 GA.	144	476 5/16	119 1/4	162	90 7/16	205 7/16	48	84	98 1/16	10 HP	4	15437
10SWF368	4452		10			524 5/16	143 1/4	186						15 HP	4	17200
12SWF368	5343		12			548 5/16	143 1/4	210						15 HP	5	18572
8SWF432	4182	432	8	3/16" P	156	492 5/16	119 1/4	166	100 13/16	217 13/16	52	91	106 7/16	10 HP	4	19826
10SWF432	5227		10			540 5/16	143 1/4	190						15 HP	5	22114
12SWF432	6273		12			564 5/16	143 1/4	214						20 HP	5	23935
8SWF504	4879	504	8	3/16" P	168	508 5/16	119 1/4	170	111 1/4	230 1/4	56	98	114 15/16	15 HP	5	21858
10SWF504	6098		10			556 5/16	143 1/4	194						20 HP	6	24450
12SWF504	7318		12			580 5/16	143 1/4	218						20 HP	6	26405

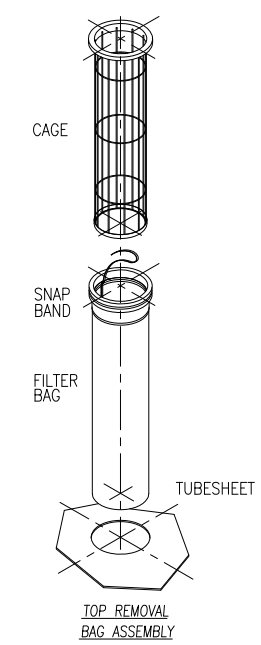
\* 24" SQUARE EXPLOSION VENT(S) ON SWF48 MODELS

STANDARD FEATURES

1. ALL WELDED HEAVY-DUTY CONSTRUCTION
2. PRESSURE/VACUUM RATING: +/-20"W.C.
3. STANDARD MATERIALS OF CONSTRUCTION: CARBON STEEL, STAINLESS STEEL, ALUMINUM
4. PAINT IS STANDARD WHITE OR ENVIROGREEN INDUSTRIAL ENAMEL
5. STANDARD NUMBER OF EXPLOSION VENTS PROVIDE A 65 : 1 VENT RATIO
6. 1/2 HP MOTOR ROTATES INTERNAL CLEANING MECHANISM

OPTIONAL FEATURES

1. INTERMEDIATE SERVICE PLATFORMS
2. EXPLOSION VENTING / RATIOS
3. EXPLOSION-PROOF ELECTRICALS
4. HIGHER PRESSURE/VACUUM RATING
5. BIN VENT STYLE
6. WIDE BAG SPACING



REV	DRAWING STATUS	BY	DATE
9732 PFLUMM, LENEXA, KS 66215 PHONE: 913-831-0740 FAX: 913-831-9271			
This drawing and the solutions/designs are the property of CAMCORP, Inc. and are furnished only for informational purposes on a confidential basis. Reproduction, publishing, or other disclosures are on a "NEED TO KNOW" basis only. Any other reproduction requires written authorization by a corporate officer.			
TITLE: REVERSE AIR DUST COLLECTOR WITH INVOLUTE INLET			
DATE:	DRAWN:	DRAWING NUMBER:	REVISION:
1/25/06	LGF	SWF-INV	