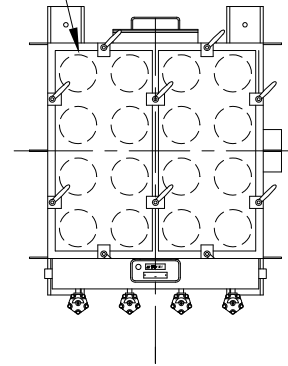


CAMCORP MODELS 3SFTR45X9-35P TO 7SFTR84X63-45P											
MODEL NUMBER	FILTER AREA (SQ. FT.)			QUAN. OF CARTS	CARTRIDGE LENGTH (INCHES)	DIMENSIONS (INCHES)					EST. INSTALLED WT.
	35 PLEATS	45 PLEATS	60 PLEATS			A	B	C	D	E	
3SFTR45X9	166	212	284	9	45	77 1/2	29	29	18 1/2	59	543
3SFTR60X9	232	298	397		60	92 1/2				74	622
3SFTR84X9	331	426	N/A		80	116 1/2				98	743
3SFTR45X12	221	283	378	12	45	85	29	37 1/2	26	59	664
3SFTR60X12	309	397	529		60	100				74	754
3SFTR84X12	441	568	N/A		80	124				98	892
3SFTR45X15	276	354	473	15	45	92	29	46	33	59	769
3SFTR60X15	386	497	662		60	107				74	870
3SFTR84X15	552	710	N/A		80	131				98	1024
4SFTR45X16	294	378	504	16	45	85	37 1/2	37 1/2	26	59	786
4SFTR60X16	412	530	706		60	100				74	888
4SFTR84X16	588	757	N/A		80	124				98	1043
4SFTR45X20	368	472	630	20	45	92	37 1/2	46	33	59	905
4SFTR60X20	515	662	882		60	107				74	1019
4SFTR84X20	736	946	N/A		80	131				98	1191
4SFTR45X24	441	566	756	24	45	99 1/2	37 1/2	54 1/2	40 1/2	59	1064
4SFTR60X24	618	794	1058		60	114 1/2				74	1197
4SFTR84X24	883	1135	N/A		80	138 1/2				98	1397
5SFTR45X25	460	590	788	25	45	92	46	46	33	59	1035
5SFTR60X25	644	828	1103		60	107				74	1163
5SFTR84X25	920	1183	N/A		80	131				98	1353
5SFTR45X30	552	708	945	30	45	99 1/2	46	54 1/2	40 1/2	59	1210
5SFTR60X30	773	993	1323		60	114 1/2				74	1358
5SFTR84X30	1103	1419	N/A		80	138 1/2				98	1577
5SFTR45X35	644	826	1103	35	45	107	46	63	48	59	1384
5SFTR60X35	901	1159	1544		60	122				74	1545
5SFTR84X35	1287	1656	N/A		80	146				98	1782
6SFTR45X36	662	850	1134	36	45	99 1/2	54 1/2	54 1/2	40 1/2	59	1402
6SFTR60X36	927	1192	1588		60	114 1/2				74	1571
6SFTR84X36	1324	1703	N/A		80	138 1/2				98	1820
6SFTR45X42	772	991	1323	42	45	107	54 1/2	63	48	59	1594
6SFTR60X42	1082	1390	1852		60	122				74	1777
6SFTR84X42	1545	1987	N/A		80	146				98	2045
6SFTR45X48	883	1133	1512	48	45	114	54 1/2	71 1/2	55	59	1757
6SFTR60X48	1236	1589	2117		60	129				74	1955
6SFTR84X48	1765	2270	N/A		80	153				98	2242
7SFTR45X49	901	1156	1544	49	45	107	63	63	48	59	1759
7SFTR60X49	1262	1622	2161		60	122				74	1958
7SFTR84X49	1802	2318	N/A		80	146				98	2246
7SFTR45X56	1030	1322	1764	56	45	114	63	71 1/2	55	59	1937
7SFTR60X56	1442	1854	2470		60	129				74	2151
7SFTR84X56	2060	2649	N/A		80	153				98	2460
7SFTR45X63	1159	1487	1985	63	45	121 1/2	63	80	62 1/2	59	2626
7SFTR60X63	1622	2085	2778		60	136 1/2				74	2862
7SFTR84X63	2317	2980	N/A		80	160 1/2				98	3202

LIFT-OFF FULL SEALL ACCESS DOORS

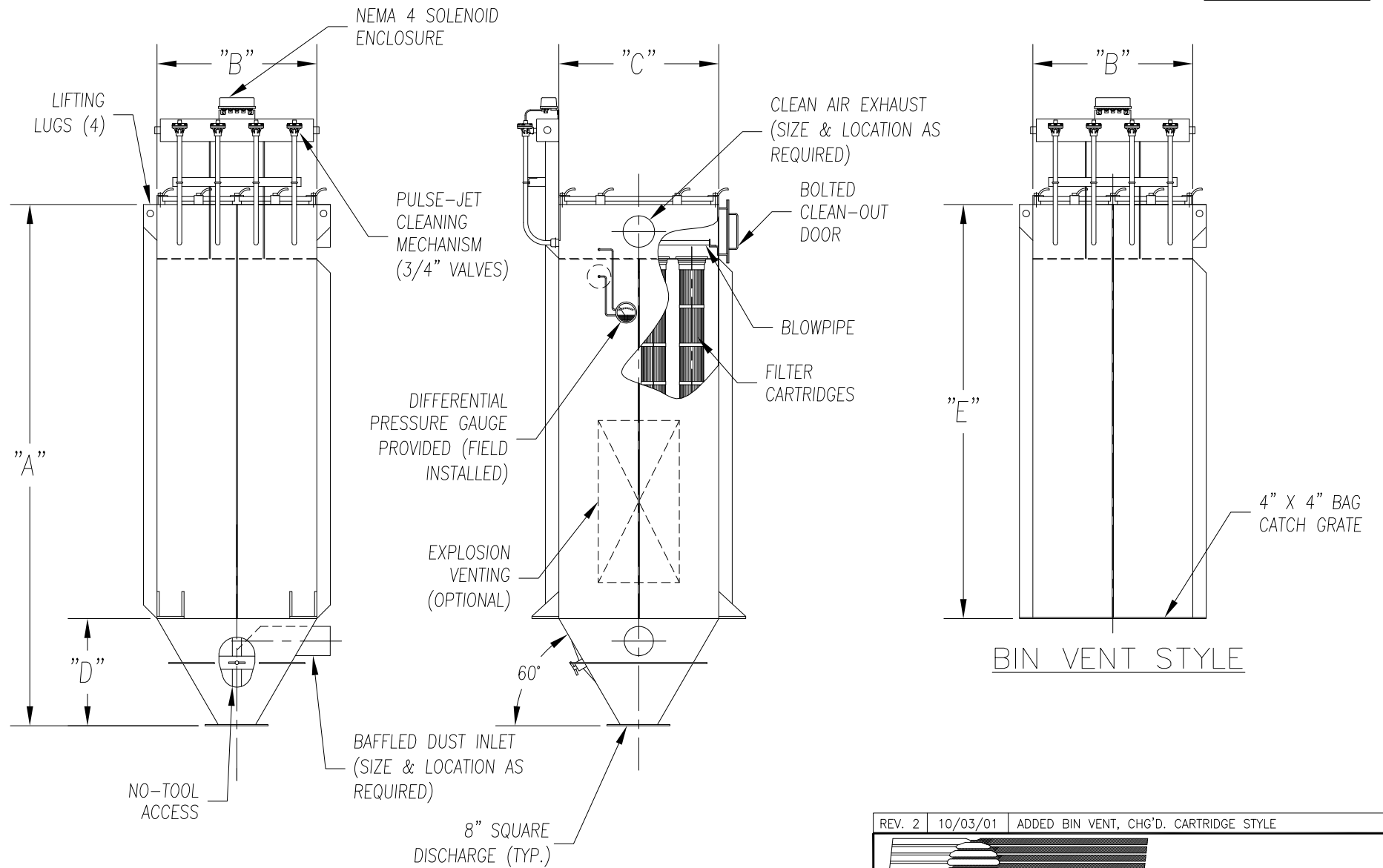
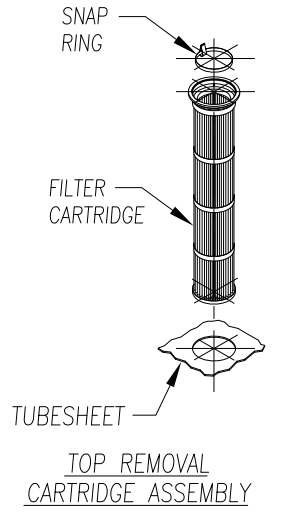


STANDARD FEATURES

1. ALL WELDED HEAVY-DUTY CONSTRUCTION
2. PRESSURE/VACUUM RATING: +/-20"W.C.
3. STANDARD MATERIALS OF CONSTRUCTION: CARBON STEEL, STAINLESS STEEL, ALUMINUM
4. STANDARD ELECTRICALS: NEMA 4 TIMER AND SOLENOID ENCLOSURES
5. PAINT: STANDARD IS WHITE OR ENVIROGREEN INDUSTRIAL ENAMEL

OPTIONAL FEATURES

1. STRUCTURAL SUPPORTS
2. SERVICE PLATFORMS
3. EXPLOSION VENTING
4. EXPLOSION-PROOF ELECTRICALS
5. HIGHER PRESSURE/VACUUM RATING
6. BIN VENT STYLE
7. WALK-IN CLEAN AIR PLENUM
8. WIDE CARTRIDGE SPACING



TOP REMOVAL CARTRIDGE DUST COLLECTOR (9 TO 63 CARTRIDGES)

REV. 2 | 10/03/01 | ADDED BIN VENT, CHG'D. CARTRIDGE STYLE

9732 PFLUMM, LENEXA, KS 66215 | PHONE: 913-831-0740 | FAX: 913-831-9271

TITLE: TOP REMOVAL CARTRIDGE DUST COLLECTOR
MODEL 3SFTR45X9-35P TO 7SFTR84X63-45P (9 TO 63 CARTRIDGES)

DATE: 8-10-99	DRN BY: DES	DWG. NO.: CAT-TCA1	P.S.: 32-00	REV.: #2
---------------	-------------	--------------------	-------------	----------